

Supporting Documentation

West Kirby St Bridget – AV cabinet and cameras


Note to parish

This bundle includes all the supporting documentation to your faculty application as required under Rule 5.5 of the Faculty Jurisdiction (Amendment) Rules 2022.

List of documentation

Item	Description	Page
<i>Overview</i>		
1	Schedule of Works or Proposals from the Petition for Faculty logged 30 September 2022	2
2	Statement of Significance dated October 2022	3
3	Statement of Needs dated October 2022	6
<i>Proposals</i>		
4	'Proposed Audio Visual Cabinet' document uploaded 5 October 2022	8
5	'Installation of Two Cameras' document uploaded 5 October 2022	12
6	'Additional Socket' document uploaded 5 October 2022	16
7	Statement from the Parish Architect dated 28 September 2022 and PCC resolution dated 29 September 2022	17
<i>Correspondence</i>		
8	Email correspondence between DAC office and parish dating from 13 July 2022 to 27 October 2022	18

Caroline Hilton, DAC Secretary



9 November 2022

We petition the Court for a faculty to authorise the following-

Please describe the works or other proposals for which a faculty is sought in the way recommended by the Diocesan Advisory Committee in its Notification of Advice.

SCHEDULE OF WORKS OR PROPOSALS

1. We propose to order a bespoke free-standing audio visual cabinet, stained to match the pews, width 1540mm, depth 790mm, height 975 mm, to accommodate securely and neatly the equipment presently in the Sound Cabinet and on the two tables next to it, all of which we will remove. The site is near the west end, under the organ pipes. Photographs, location, specification and quotation and are in the supporting documents.

2. We propose to install securely our two new video cameras at the rear of the church for live-streaming services, replacing the borrowed ones which we have used since 2020. One to be under the organ pipes, in the centre, and the other on the wooden column supporting the organ pipes. Details of the cameras, brackets, cable routes and locations, with photographs, are in the supporting documents. We already have the new cameras but they and their cables are not fixed to the building.

3. We propose to have an additional brass power socket fitted, by a qualified electrician. We already have the socket, which matches the others in the church which were fitted during the rewiring in 2019. The site is next to another socket, on a pew end, so there is no significant new cabling. Photographs are in the supporting documents.

We have received advice and assistance from Mr Christopher Tann, Recording Manager of the Liverpool Philharmonic, who is a member of the congregation, and from the Parish Architect, whose statement is in the supporting documents.

Copies of the Standard Information Form and any drawings, plans, specifications, photographs or other documents showing the proposals must be provided with this petition.

St Bridget's Church, West Kirby: Statement of Significance, October 2022

Setting

St Bridget's is the ancient Parish Church of a district now divided into seven parishes; it is set in the Old Village Conservation Area, away from traffic noise, about 1km from the modern centre of West Kirby. It lies on the slope of Beacon Hill, adjacent to Ashton Park, Wirral Way footpath, Church Primary School and playing field, Old Rectory, and St Bridget's Centre (our Church Hall and Community Centre).

The tower is visible from the park but mainly obscured from elsewhere in the town.

The Church is set in a graveyard surrounded by low sandstone walls, a feature typical of the area.

The School buildings are 1960s and later. The Centre incorporates the Victorian sandstone schoolroom but is otherwise modern, rebuilt in 2011.

The foundation of the Church goes back to the Norse settlement of Wirral c900, and the name "West Kirby" derives from this ancient Church.

Churchyard

The Churchyard is in two sections:

- (a) near the Church and paths, a pretty area with trimmed grass around the graves, flower beds, shrubs and ornamental trees
- (b) lower churchyard, a managed conservation area with many wild flowers, birds, insects, trees.

Description of building

Grade II listed building.

The first Church on the site was probably a wooden 10th century building; first written record 1081, and oldest surviving masonry 13th century. Tower c1500: Oldest edifice in the district, well known landmark.

Some medieval stonework still to be seen, but the Church was almost entirely rebuilt 1869-70 by Kelly & Edwards of Chester, removing 18th century alterations and attempting to reinstate the medieval layout. Fittings and windows are 1870 and later. 19 windows by Kempe, spanning his whole career and showing development of his style.

Thomas Eaton, Rector 1860-1889, together with benefactor Richard Barton and his family, masterminded the restoration and are commemorated in windows and monuments.

Macdonald family restored the chapel in 1963, moving the organ to the west end.

Random sandstone, with gabled roof in slate; black and white timber framed north porch with red tiled roof 1876, matching the lychgate.

Wooden strip floor 1963, encaustic floor tiles in places including sanctuary and baptistry, c1870.

In 1972 the space under the tower was converted to a choir vestry by installing coffered oak doors between the tower and nave.

See plan below for layout and age of various parts. Nave, aisles, west tower, chancel, north chapel, vestry, north and south porches. 4-bay nave arcade with octagonal piers, gothic arches.

Whitewashed walls.

Seats about 215 adults comfortably, plus 45 in the chapel and 24 in the chancel. About 60 more can be seated at a pinch, and the whole primary school can just fit in.

Crowded, with pews up to the walls, except at the west end where four pews were removed in 2011 to provide space for wheelchairs and comfortable chairs.

Gas central heating system renewed in 2016.

Sound system renewed in 2017.

Lighting and wiring renewed in 2019.

Our Visitors Book often mentions that people were married or baptised here, or attended services when at the school long ago. Visitors light candles in our Prayer Corner, sit quietly to pray and appreciate the peaceful numinous atmosphere, and admire the beauty of the building. The Church is beloved by many and is full of memories.

Many of the graves are regularly visited, and we have amateur genealogists looking for family graves.

The Church is a popular subject for local artists and appears on calendars etc.

Items of special significance

Norse Hogback gravestone, 10th century, of moderate significance, subject of academic research and publications.

Kempe's work (1872 – 1907) of moderate significance: 19 stained glass windows, spanning his career; wrought iron screen, rood beam, rood and grille; chancel arch painting with wooden figures. We have 14 small spare Kempe windows on a shelf in the vestry, originally sited in the dormers but replaced 1908. East window has rare tracery, superimposed cusped arches.

Memorials – most notable van Zoelen 1690, and Glegge 1714, the latter under the chapel floor but accessible through a trap made for the purpose. WWI memorial plaque on south wall.

Bells of moderate significance: five cast by Abram Rudhall of Gloucester 1719; one recast by Bathgate & Wilson of Liverpool 1854, thought to be the only bell they made; three by Taylor of Loughborough 1889.

Organ of moderate significance: by Willis 1870, , with an oak case by John Douglas of Chester, moved to west end 1963.

Other items of low-moderate significance:

- 18th century benefaction boards in room under tower (choir vestry)
- Tudor west doorway to tower with Tudor roses and coats of arms on lintel outside
- 19th and 20th century peal boards in ringing chamber
- 17th century benches and bench ends around the baptistry
- 20th – 21st century embroidered kneelers and their catalogue
- altar frontals, chasubles etc, 19th, 20th, 21st century
- 19th century Mansfield stone canted pulpit (1881) and font (1871)
- list of rectors from 1140 – present
- 19th century oak lectern of medieval design
- 19th century altar made from timbers from old roof of Chester cathedral
- tower clock 1898
- crimson and gold 19th century wooden gothic reredos
- 17th century bench ends in the Chapel, moved from the baptistry
- silver-gilt chalice and paten in memory of Elizabeth Barton
- wooden corbels depicting an angelic orchestra
- 19th century oak pews and choir stalls
- wagon boarded chancel roof, arch braced gabled nave roof
- other memorial tablets around the walls

Sources consulted

Myers A. R., The Story of the Churches of West Kirby Parish, Langston Press, 1995.

Pevsner N. et al, The Buildings of England: Cheshire, Yale University Press, 2011.

Ellison N., The Wirral Peninsula, Robert Hale, 1955.

Brownbill, J., West Kirby and Hilbre, a Parochial History, Henry Young, 1928.

St Bridget's Church Visitors Book

<http://www.imagesofengland.org.uk/> (Historic England)

<http://ukbmd.org.uk/genuki/chs/churches/> (UK & Ireland Genealogy)

http://www.wirralbranch.org.uk/Towers/West_Kirby/westk.shtml (Guild of Bell ringers)

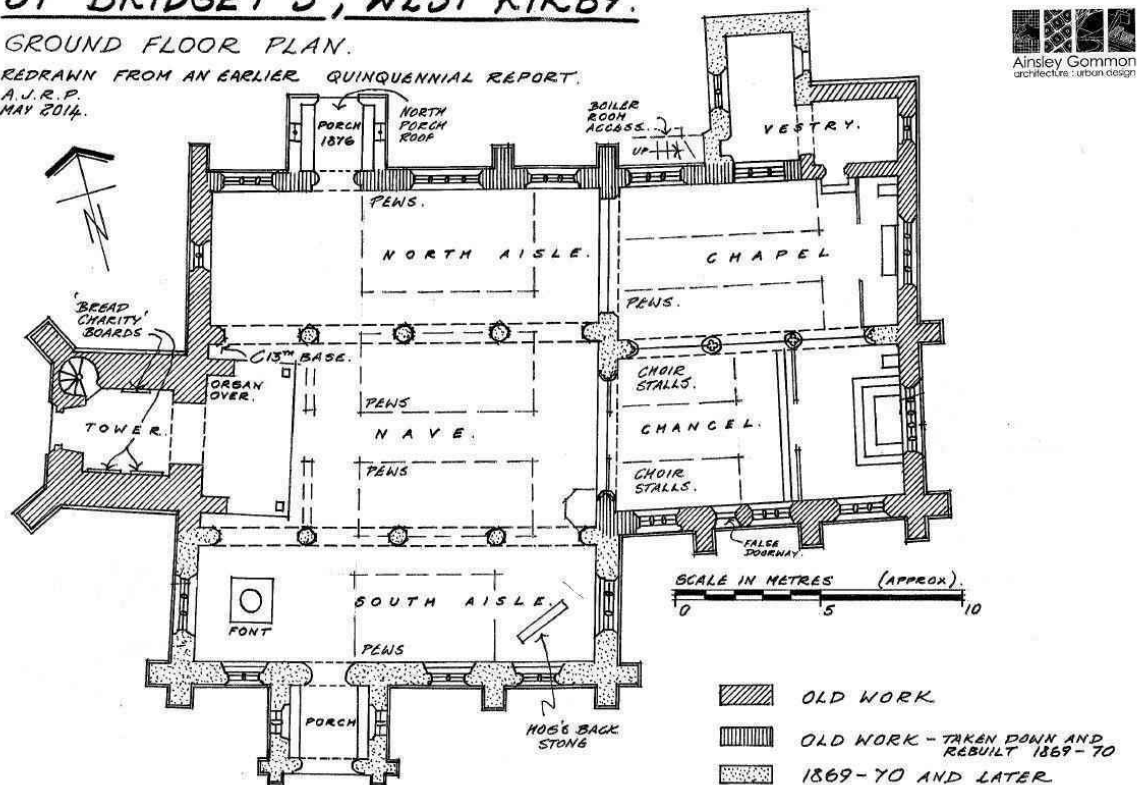
<http://www.stbridgetscentre.co.uk/>

<http://www.westkirbymuseum.co.uk/>

ST BRIDGET'S, WEST KIRBY.

GROUND FLOOR PLAN.

REDRAWN FROM AN EARLIER QUINQUENNIAL REPORT.
A.J.R.P.
MAY 2014.



PARISH OF WEST KIRBY ST BRIDGET WITH CALDY

Statement of need for AV cabinet and installation of cameras and socket, Oct 2022

The Parish

Population c6500, comprising part of small town of West Kirby, plus Caldý Village, which is served by the daughter Church. Electoral Roll (2022) 193.

Services and approx attendance (adult + U16) at St Bridget's Church:

Main Sunday Service 10am Eucharist (75 + 5) , with concurrent children's Storytelling Service (5 + 10). 8am Eucharist (18), Evening Prayer (20).

Wednesday 11.30am Eucharist (10).

Wednesday Café in Centre, (50 + 8) serving wider community.

School services for two primary schools for Christmas Carols, Harvest, Passiontide, Leavers etc, plus Christingle.

Annual *Experience Easter* week attended by all children from both schools in batches.

School visits as part of their curriculum.

St Bridget's School has 420 children.

Bell ringing every Sunday and Tuesday.

About 25 funerals, 25 baptisms, 10 weddings each year.

Occasional Concerts, Art festivals, Heritage weekend, etc

Visits from History Societies and others; tours of the church

Church open in the daytime; well used prayer corner with candles.

The Need

We like to keep the church building open during the week, but we are concerned for the security of the AV equipment and cameras, so we want to install the cameras securely, and stow the equipment in a locked cabinet.

Our temporary installation is untidy, and we would like to improve the appearance of our building, which is appreciated as a beautiful sacred space, by the worshipping congregations and by visitors.

It will be safer to have the cables pinned in place rather than loose.

We started livestreaming services in 2020, because of the pandemic. Most worshippers have returned to attend in person, but the streamed Sunday services are still valued by many, typically receiving about 40 views. For example they are accessed in care homes, and by people who have retired outside the district, and by people who are housebound or ill.

See <https://www.youtube.com/channel/UCnWftoWF4MhN7V-mgGGajnQ>

We also offer livestreaming for Weddings and Funerals: this is much appreciated by people unable to travel to the church. We expect the demand for streaming to increase in the future.

We follow guidance on privacy and safeguarding: everyone who operates the equipment is trained.

At present for the AV system we use adapters and extension leads from a socket on the adjacent pew end, which also serves the online donation station and the vacuum cleaner, so an additional double socket is desirable.

The Impact

Photographs in the supporting documents show our temporary installation. A new cabinet and cameras on brackets will be much tidier and more secure – a positive impact.

We propose to run the cable from the central camera across under the organ pipes, behind the wooden lip, which will conceal it, except from anyone sitting underneath who looks up.

We propose to run cables down the back of the wooden column supporting the organ pipes, in slim trunking coloured to match the wood. The column dates from the 1960s and is not ornamental. This cable run will be seen only from the back and will not be intrusive.

The cables are low voltage.

We propose to fix the cameras neatly on purpose-made brackets, as shown in the supporting documents. They are no more intrusive than a light fitting. Brackets and cameras are dark grey. The locations have been chosen discreetly with regard to the aesthetics of the building, while enabling us to film most of the building, including the entrance of brides, and the baptistery, when this is requested.

We propose to order a bespoke audio-visual cabinet from Turning Leaf: see <https://www.turning-leaf.org/furniture/church-furniture/> who have been making church furniture for over 20 years. It will store our equipment compactly, securely, safely and tidily. It will be stained to match the pews. It will be free standing, not fixed to the fabric of the church. It will replace a black metal cabinet and two old formica tables.

The proposed new socket is brass with a wooden surround, matching the others in the church which we installed (with permission) in 2019.

Overall we consider the impact to be entirely positive.

Support and advice

The supporting documents include a supportive statement from the Parish Architect, Alf Plant, and the PCC resolution for this application, which was passed unanimously except for one abstention. We have consulted the DAC Secretary who has advised us that no further consultation is required as this is not a major scheme and our listing is only Grade II.

We have received advice from the Recording Manager of the Liverpool Philharmonic about what AV equipment to buy, where to site the cameras, how to install them, and what cabinet to order. We have received advice from a retired police inspector about security.

Proposed audio visual cabinet

We propose to order a bespoke audio visual cabinet similar to <https://www.turning-leaf.org/product/mixing-desk-cabinet-05/> stained to match the pews, width 1540mm, depth 790mm, height 975 mm, to accommodate securely and neatly the equipment presently in the Sound cabinet and on the two tables next to it. Height the same as the present cabinet, width a bit less than present cabinet plus tables.



4 Maritime House, Maritime Business Park
Livingstone Road
Hessle
East Yorkshire HU13 0EG
Tel: 01482 219017

Quotation

Quotation For: St Bridget's Parish Church

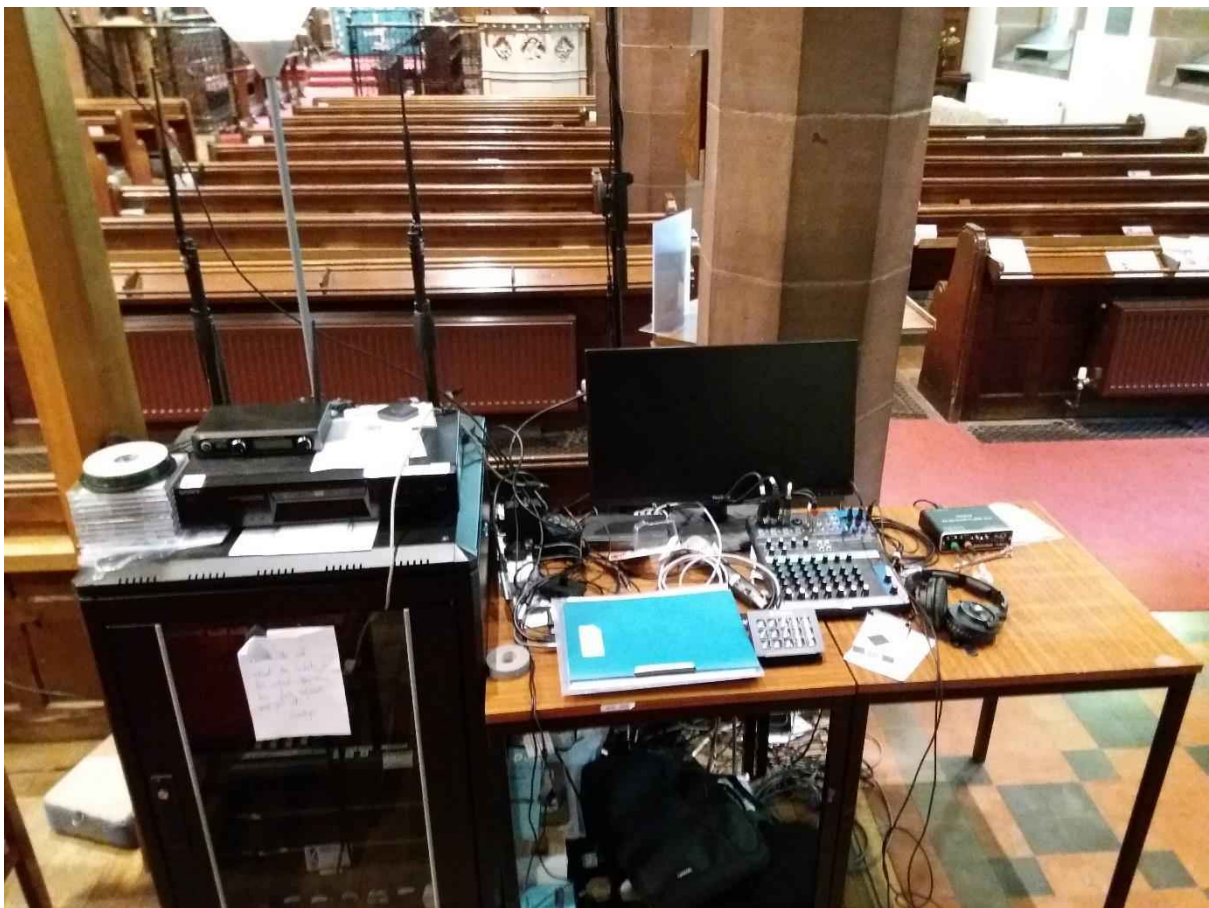
Quotation Date: 15 June 2022

QTY	DESCRIPTION	UNIT PRICE	TOTAL
1	Mixing Desk Cabinet 05 - Real wood veneer	£1,153.00	£1,153.00
1	Bespoke dimensions	£350.00	£350.00
1	Staining service	£145.00	£145.00
1	Cooling fan - supplied and fitted	£95.00	£95.00
Notes: Lead time: 3-4 weeks		Carriage	£100.00
		Subtotal	£1,843.00
		VAT	£368.60
		TOTAL	£2,211.60

See <https://www.turning-leaf.org/furniture/church-furniture/> for more about this company. Church furniture is their speciality; they have made it for 20 years.



Similar, but wider, cabinet by Turning Leaf in another church. Colour similar to ours.



Present set-up. Untidy, vulnerable to theft, damage, dust.

West end of church, looking east

The cabinet will be free standing, not fixed to the fabric of the church.

Right hand end to be near middle of stone pillar. Left hand end same as existing cabinet.

We propose to dispose of the existing black cabinet and tables.

Similar cabinet by Turning Leaf, before staining, from their website

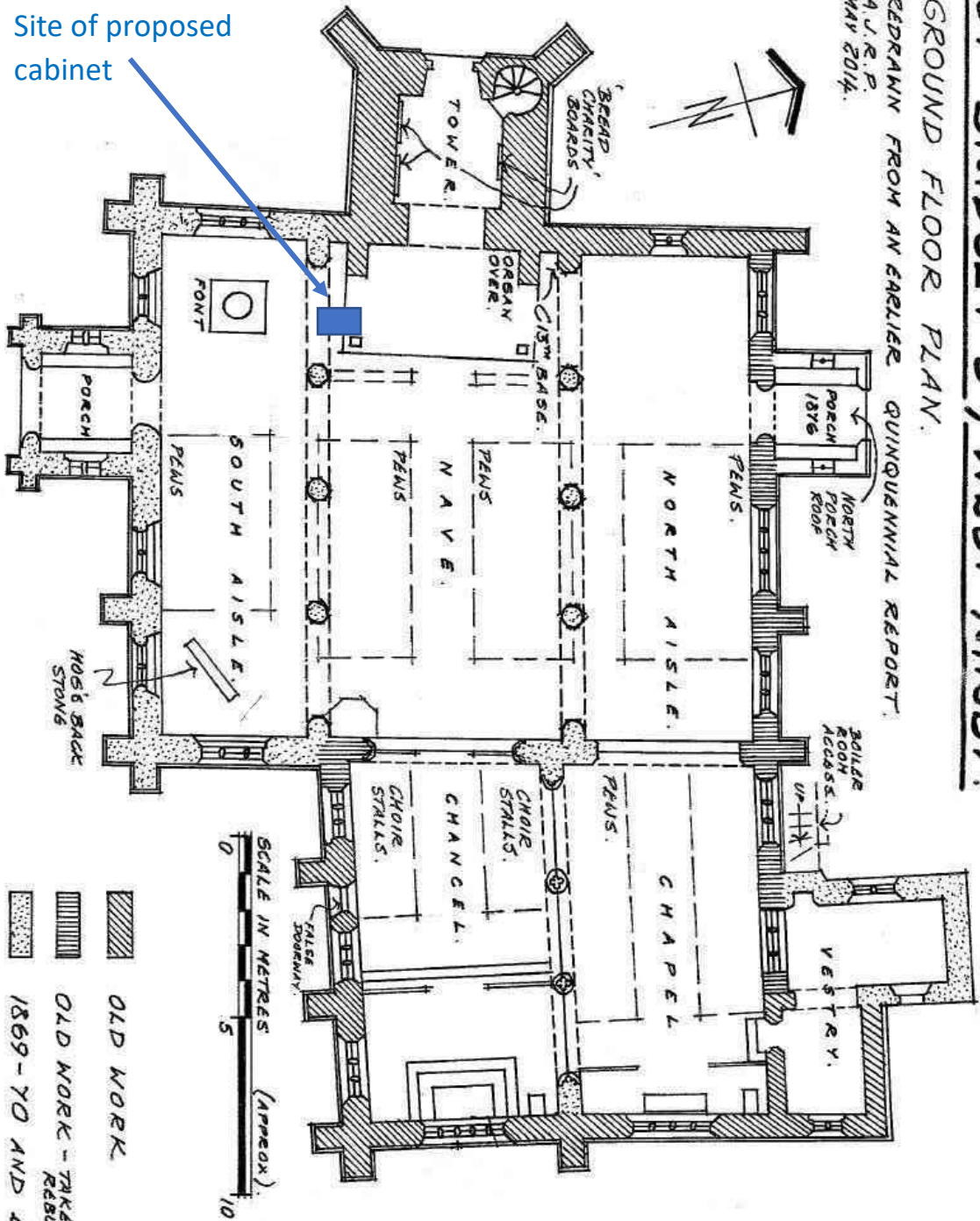


Design of proposed
bespoke cabinet

ST BRIDGET'S, WEST KIRBY.

GROUND FLOOR PLAN.

REDRAWN FROM AN EARLIER QUINQUENNIAL REPORT.
A.U.R.P.
MAY 2014.



Installation of two cameras

Since 2020 we have live streamed services using two borrowed cameras in a temporary installation, not fixed. We have now bought two new cameras and propose to fix them securely in place, with fixed cable runs. The present set up is vulnerable to theft and damage, especially when we leave the church open and unattended.

Qty	Part No.	Description	Unit Price	Line Total
1	PTO-PT30X-SDI-GY-G2-G	PTZ Optics: 30X-SDI-GY-G2-G (Gray) Camera	£1,298.90	£1,298.90
1	PTO-PT12X-SDI-GY-G2-G	PTZ Optics: 12X-SDI-GY-G2 Camera	£1,191.28	£1,191.28

Electronic Payment to:

Bank: HSBC

Account Name: RCB Logic Limited

Sort: 40-08-41 Account No: 7148 0987

Total Excl. VAT	£2,490.18
Shipping Excl. VAT	£0.00
VAT (20%)	£498.04
TOTAL	£2,988.22



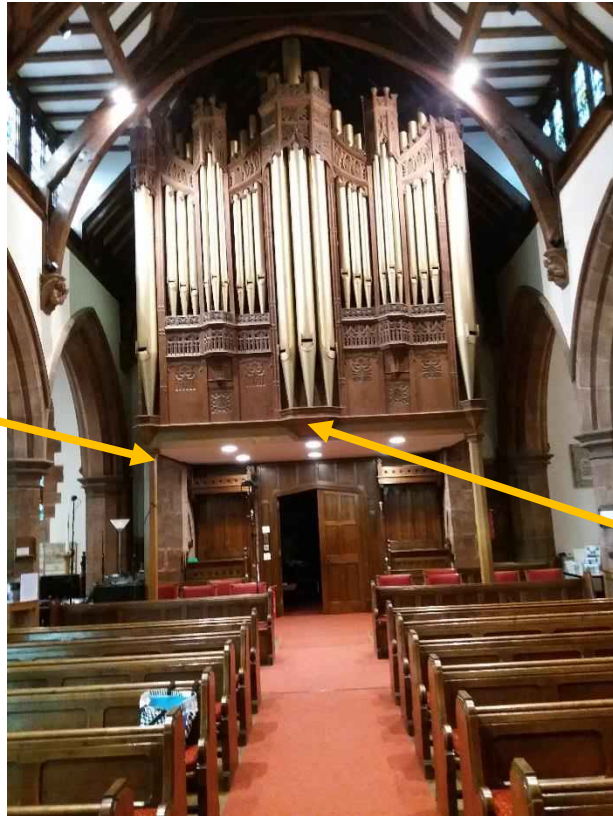
PTZ Optics: 12X-SDI-GY-G2 Camera



PTZ Optics: PT-CM-1-BK Ceiling Mount Bracket (Black)



Brackets to attach cameras



Proposed locations of the two cameras



Site of first camera, to be secured via bracket to wood, under organ pipes, central.

Pair of low voltage cables to run behind wooden lip, across to wooden pillar, then down on west face of pillar to sound desk.

In trunking matching pillar.

See last page for cable route drawing

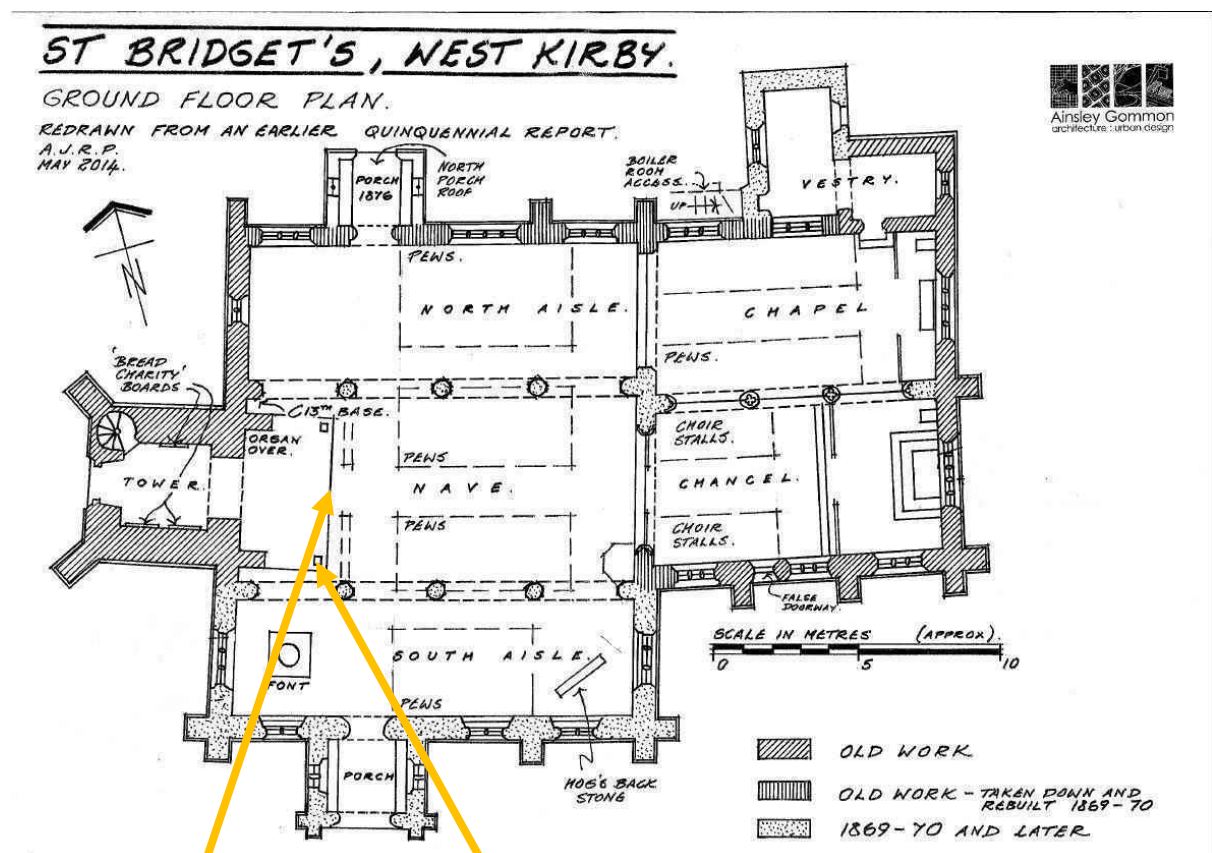


Site of second camera, to be secured via bracket to wood, near top of pillar

Pair of low voltage cables to run down on west face of pillar to sound desk, in trunking matching pillar.

See last page for cable route drawing

Wooden pillar dates from 1963, when organ pipes were moved from Lady Chapel.



Camera 1

camera 2

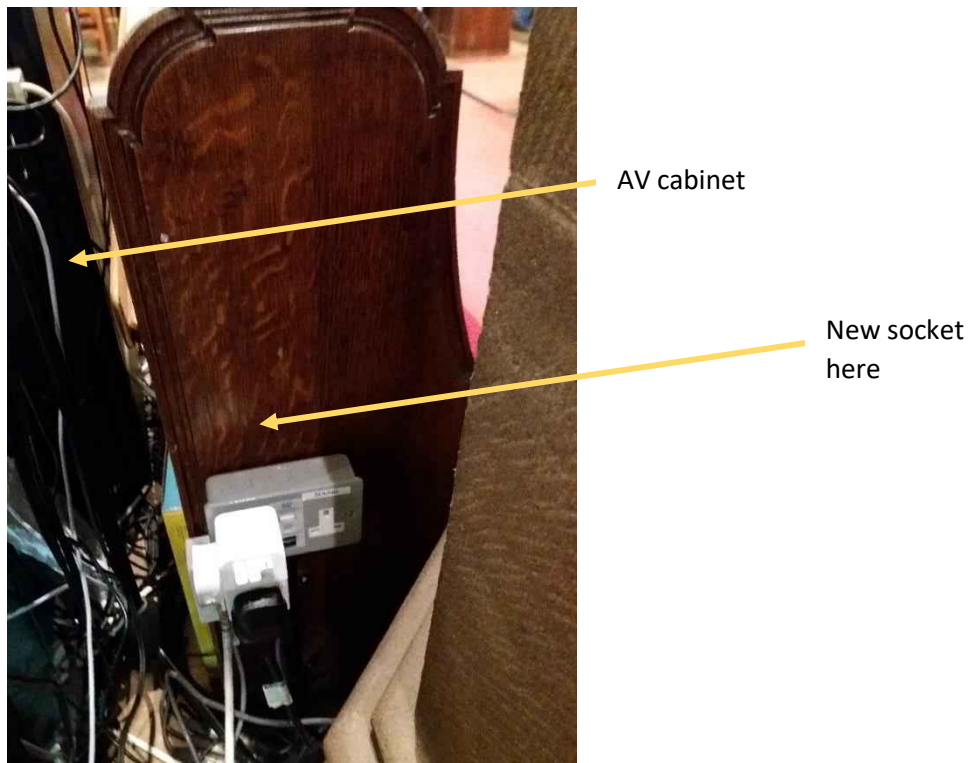


in blue
Proposed route of (low voltage) cables from cameras, as agreed with Parish Architect.
Proposed new cabinet to replace present black one in foreground.

Two temporary borrowed cameras on poles, and standard lamp, seen in picture, to be removed.
Clutter to be tidied into new cabinet.

Additional socket

At present, for the audio visual system we use adapters and extension leads from a socket on the adjacent pew end. This also serves the Giving Station and the Vacuum Cleaner.



We already have, in store, two spare double sockets provided by A J Smith who rewired the church. These are brass with wooden surrounds, and match the others in church. We propose having one installed by a qualified electrician above the existing socket, on the pew end.



Matching socket elsewhere in the church

The following motion was passed by the PCC on 29th September 2022

This PCC agrees to the recommendation of the Enhancement Group for the installation of two cameras, a cabinet for audio-visual equipment, and an additional power socket in St Bridget's Church, and resolves to make application for the grant of a Faculty for this work.

14 members present. 13 in favour, 1 abstention, 5 absent.

Statement from the Parish Architect

St Bridget's cameras and cabinet

Alf Plant <aplant@agarchitects.co.uk>
To: Priscilla Bench-Capon <pbenchcapon@gmail.com>
Cc: alex williams <rectorwestkirby@gmail.com>

28 September 2022 at 11:02

Thanks for the information Priscilla

The proposed cabinet looks like it will blend in with the other church furnishings very well and is well suited to the purpose that it is to serve.

Electrical equipment such as a sound desk with all of its associated cabling is always very difficult to accommodate neatly and this seems like a sensible and visually acceptable solution that will also improve security so I am fully supportive of what is proposed in terms of the cabinet.

Likewise, I think that the additional sockets are a sensible enhancement that will improve safety and functionality. The style of socket that is proposed is far more visually acceptable than the functional surface-mounted boxes and sockets that have been used in the past.

The camera locations that are proposed are sensible and will give excellent viewpoints from where the live-streamed services can be recorded. The equipment that is proposed looks like it will be un-obtrusive, neat and functional. In this regard, I am also supportive of what is proposed.

I hope that this provides the information that you need for the faculty but please let me know if I can be of further help to you.

Kind Regards

Alf

Alf Plant, RIBA CA Architect, Director

AINSLEY GOMMON ARCHITECTS

1 Price Street | Hamilton Square | Birkenhead | Merseyside | CH41 6JN

Phone: 0151 647 5511 | Website: [AG](#) | Twitter: [TW](#) | LinkedIn: [LI](#)

Ainsley Gommon Architects Ltd. Registered in England and Wales 4187948

INVESTORS IN PEOPLE™
We invest in people Gold

[Please Click Here to review our Environmental Policy](#)

West Kirby St Bridget - Correspondence with parish and others

Date	Message
07/08/2022 To: Katy Purvis From: Bill Smith	A faculty application is being prepare for the installation of live stream cameras. The team want a cabin to house all the equipment, is this to be included in the application, it is a free standing cabinet similar to the attached pictures
09/08/2022 To: Bill Smith From: Katy Purvis	We will need to see the design and include it in the application
11/08/2022 To: Alex Williams From: Caroline Hilton	<p>I write regarding your two queries from our telephone conversation yesterday:</p> <ol style="list-style-type: none"> 1. Polycarbonate window protection removed from Caldy All Saints – this strictly would need faculty permission (as it is needed for the installation of window protection). Please can you let me know how much of the polycarbonate was removed, was it all of it? I have found a guidance note on the Ecclesiastical website about stained glass window protection which advises that: <i>All external windows containing stained, painted or engraved glass, must be externally protected by stainless steel grilles or polycarbonate sheeting which entirely covers the window in order to qualify for a premium discount</i>. Here is a link to the guidance note: Protection of stained glass windows Church guidance note Ecclesiastical. It also gives a phone number to discuss this topic with an adviser. 2. Portable cabinet for wifi streaming equipment and new cabling for West Kirby St Bridget – I've had a chat with my colleague Katy about this, she has received an enquiry about a cabinet from Bill Smith and he had sent a photo of the sort of thing proposed, please see attached. Was this what you were referring to? As this is such a large item I don't think it could be classed as 'portable audio-visual equipment' as set out in List A, and it may need faculty permission.
13/09/2022 To: Caroline Hilton From: Alex Williams	<p>Sorry to bother you but I wondered if you could resend some information</p> <p>You sent me a very helpful email about what we did and didn't need to apply for faculties for - it was in relation to the cabinet we propose to install for our livestream equipment in st Bridget's -I cannot now find it.</p> <p>Could you possibly resend it if you still have it!</p>
13/09/2022 To: Alex Williams	<p>Thank you for your message. Please see the email attached that I'd sent which includes reference to the proposed wifi cabinet for St Bridget's. It includes an attached photo of a cabinet we had received from Bill Smith, and I had indicated that if this the desk proposed (or similar to this) it</p>

From: Caroline Hilton	does not fit in with List A 'portable audio-visual equipment' due to its size and would require faculty permission.
14/09/2022 To: Caroline Hilton From: Alex Williams	Could you also confirm that when we are ready to install our cameras in a more permanent way whether we need a faculty or a List B? We have in our notes that we need a diagram of the proposed installation ie wires etc. And finally, we have a meeting tomorrow to update the small group looking at the possible toilet/extension and just wondered if there was any chance of feedback from the last DAC meeting?
16/09/2022 To: Alex Williams From: Caroline Hilton	I've just double checked this, and as St Bridget's is listed faculty permission will be needed for the installation of cameras. For supporting information you will need to provide the following details: <ul style="list-style-type: none"> • Photographs showing the locations for the cameras (which could be marked up to show exact positions) • Plan showing where they will be positioned in the church and cable routes • Details of how they will be mounted and fixed, with comment/input from your church architect • Statement of Need and Statement of Significance <p>We can pencil this in to the agenda for the 21 October DAC if you wish. The deadline for submissions is 7 October. You may also wish to put this and the wifi cabinet together in the same faculty application.</p>
06/10/2022 To: Caroline Hilton From: Priscilla Bench-Capon	Thank you for your advice about the permissions we need for an AV cabinet and installing cameras in St Bridget's Church. I understand that you pencilled us in for the October DAC meeting. I have now submitted the Faculty application via the online Faculty system. i hope it contains everything that you require.
27/10/2022 To: Alex Williams From: Katy Purvis	I am writing to let you that at its meeting of 21 October 2022, the DAC considered the proposals for the permanent cameras and new AV desk and resolved to recommend the scheme, subject to the following provisos. <ol style="list-style-type: none"> a. Any electrical works should be carried out by an electrical contractor accredited with the NICEIC or ECA, to the standards recommended in the Churchcare "Guidance Note: Electrical Wiring Installations in Churches" available via https://www.churchofengland.org/sites/default/files/2018-11/CCB_Electrical-wiring-installations-in-churches_Apr-2013.pdf b. The fixings and cable run arrangement to be agreed with the Church Architect as is the usual requirement <p>This means that Caroline will shortly be able to raise the notification of advice, which will enable you to display the public notices</p> <p>If you have any queries please let me know, I will try to help</p>