



RECTOR'S ACCOMMODATION

APPENDIX 2022



SEPTEMBER 12, 2022

E&P PCC

OVERVIEW

An attractive, well-proportioned house, built in 1895 of local sandstone, in the centre of the village.

The house was commissioned by the 1st Duke of Westminster and designed by the well-known architect of the late 19th Century John Douglas. The house is attached on the far side to the Old Post Office which is also Grade II listed, with both properties having been listed in 1983.

Upstairs are three double bedrooms and a good size bathroom with toilet, bath and separate shower. Downstairs there is a light and airy sitting room with a wood burner and a large, newly fitted kitchen diner. The house has been recently refurbished and decorated with new flooring throughout of tiles, wood and carpet.

The house has ample storage including a larder and a large cellar extends beneath the whole of the ground floor.

A covered passageway from the kitchen leads to a separate lavatory and laundry room and through glass doors to a small paved inner courtyard.

Outside there is a private office, a small garden to the front of the house and access to a close by large garden area which is planned for landscaping and development.

Access and parking are in a courtyard shared with five other houses positioned down a private driveway.

A lovely family home in an attractive village close to the church school, well placed for easy transport links, countryside walks, river activities and yet only two miles from Chester city centre.

LOCATION



Figure 1 - location of police house within Eccleston

FLOORPLAN

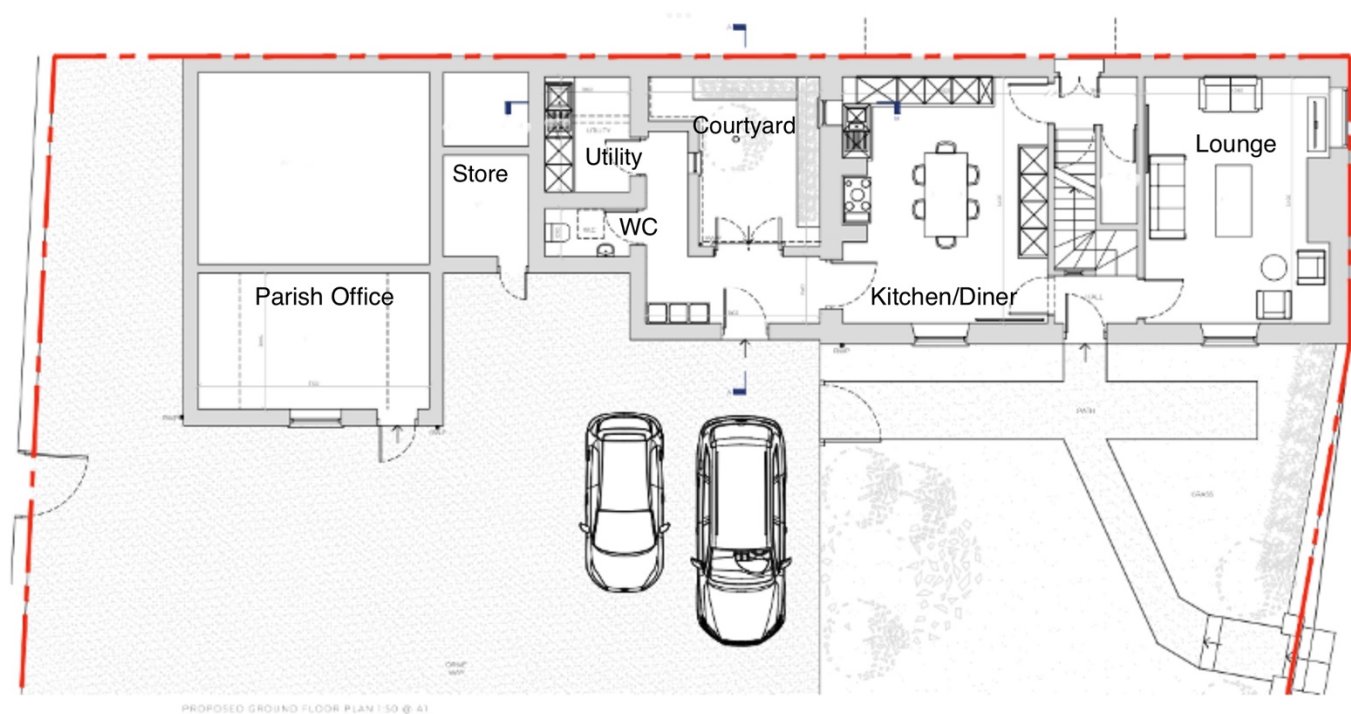


Figure 2 Ground Floor

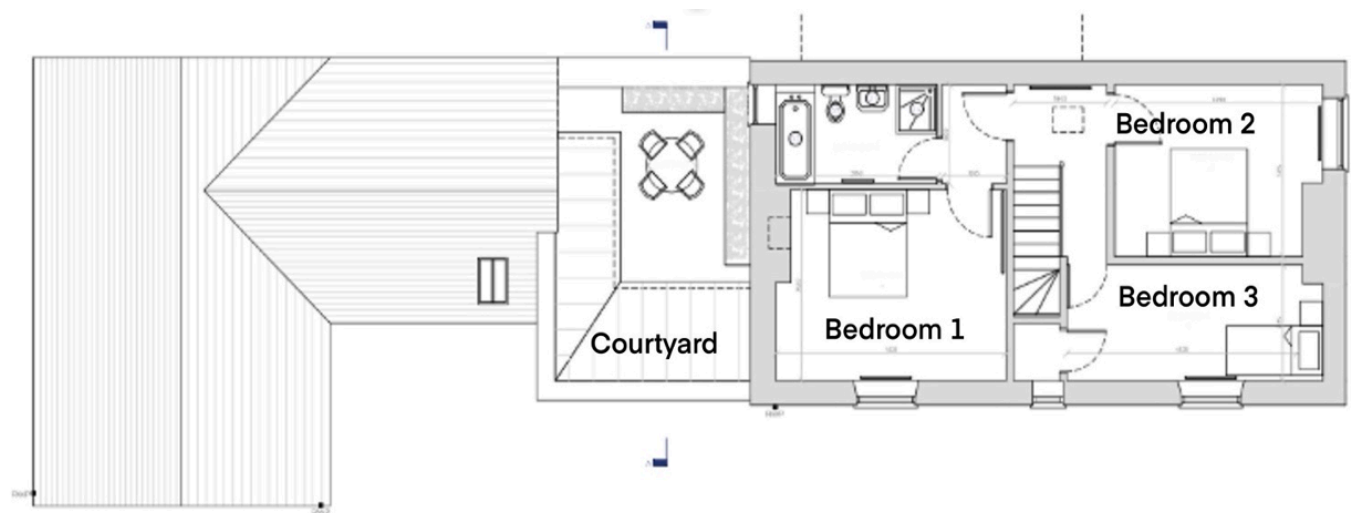


Figure 3 First Floor



Figure 4 Lounge - 5450 x 4090mm



Figure 5 Hallway



Figure 6 Kitchen Diner - 5450 x 4525mm



Figure 7 Utility Room



Figure 8 Bedroom 1 - 4525 x 3520mm



Figure 9 Bedroom 2 - 4090 x 3165mm



Figure 10 Bedroom 3 - 4525 x 2135mm



Figure 11 Bathroom