



Parish Profile

Ephesians 3: 20-21

| | | |
|-----|---|----|
| 1 | Summary | 2 |
| 2 | Congleton | 3 |
| 3 | The Parish Context | 5 |
| 4 | The Rector we need | 7 |
| 5 | Our People | 8 |
| 6 | Parish Life | 9 |
| 6.1 | Services | 9 |
| 6.2 | Pastoral Activities | 10 |
| 6.3 | Outreach | 11 |
| 6.4 | Heritage & Events | 13 |
| 6.5 | House Groups..... | 15 |
| 6.6 | Music..... | 16 |
| 6.7 | Financial Summary | 16 |
| 7 | Facilities and Buildings | 18 |
| 7.1 | The Rectory | 18 |
| 7.2 | St. Peter's Church | 19 |
| 7.3 | St. Stephen's Church | 19 |
| 7.4 | Holy Trinity Church (Chapel of Ease)..... | 20 |
| 7.5 | St. John the Evangelist Church (Chapel of Ease) | 21 |
| 7.6 | St. John's Community Centre | 22 |
| 7.7 | Mossley Village Hall | 23 |
| 7.8 | The Chappell Centre..... | 24 |
| 7.9 | St. Peter's Parish Rooms | 25 |
| 8 | Appendix: Key to the Future | 27 |

1 Summary

Our mission is to nurture our current congregations and to reach out with the love of Christ to those that are not yet part of our church community; engaging with them wherever they are, bringing them into a relationship with God that will enrich their lives and help build God's Kingdom in our town.

The Parish of Congleton is undergoing a time of great change, following new staffing structure and retirement of the Rector while transitioning to a new Pastoral Scheme. Twenty years ago, four of the five parishes in Congleton, two evangelical and two central churchmanship, united into a Team Parish with a Rector, two team vicars and a Church Army Evangelist. Over time financial constraints have reduced the size of the team. In recent years the Rector led us in developing our “2020 Vision”, a process which naturally has caused much heart searching and pain.

Recognising our challenges, the 2020 Vision identified the following key priorities:

- To have one worshipping community at the heart of our parish.
- To grow a younger church through mission to children, young people and families.
- To find new and alternative ways of using our other church and community buildings for the sake of mission.
- To continue to provide pastoral care to our church members as well as the wider community, especially at a time of significant change.

Our new Rector will be supported by four active Readers and the Children and Families Missioner whose task is to lead and help grow a younger open evangelical church. It is envisaged that a potential house for duty minister will have a particular role in providing pastoral care for our existing church members, supported by a licensed Pastoral Worker who commenced training in September. Our employed Parish Administrator is the first point of contact for the parish and will continue to give necessary administrative support.

The priority of our 2020 Vision is undoubtedly mission orientated: we are charged by Jesus to “Go and make disciples” and for the Church of England to have an active presence in Congleton we need to grow numerically as a church community. Primarily that mission needs to be focussed on a younger generation by engaging with, welcoming and including children and their families. In addition, our activities with teenagers, young adults and the elderly will be made both in our churches and in our community buildings, sometimes in partnership with other churches or social agencies.

The Church Commissioners and Bishop of Chester approved the new Pastoral Scheme which was brought into law on the 1st August 2019. We are now implementing the new Pastoral Scheme of one parish comprising two parish churches - St. Peter's in the town centre and St. Stephen's near the town centre, with two chapels of ease; Holy Trinity in Mossley and St. John's in Buglawton.

We are blessed to have good facilities at Mossley and Buglawton and we already have good experience of the value of community involvement there. In recent years Mossley Village Hall and The Chappell Centre together with St. John's Church Hall (all parish assets), have been developed / modernised to provide high quality community facilities within the neighbourhoods of Mossley and Buglawton. In the future the parish will maintain its Christian presence and witness in Mossley and Buglawton primarily through these facilities.

At this time of change there is a significant opportunity for the new Rector to further shape our vision and development into 2020 and beyond. It is a vision for the coming years, and it will take time, imagination and effort to turn the vision into reality.

2 Congleton

Congleton is a small friendly market town in Cheshire on the edge of the Peak District, with a population of 26,000 which is growing. It is well served by good road and rail links and is a 40-minute drive from Manchester Airport. The M6 motorway gives good access north and south with the M62 providing links to the east and west. Congleton railway station has direct links to Manchester to the north (40 minutes) and via Stoke-on-Trent (15 minutes) to London (less than 2 hours) and the south. A new link road to the west of the town is under construction.



Congleton is in many ways a dormitory town with people commuting to Manchester, Stoke-on-Trent and Crewe for employment. A lot of new housing is currently under construction largely outside the parish but adjacent to it. In the town, Congleton Business Park and Radnor Park Industrial Estate house businesses that employ significant numbers. Siemens is a major employer and there are also successful start-up companies in the town and at Alderley Park Science Park. These draw on a supply of graduates from Universities in Manchester, Salford and Stoke-on-Trent. The town has a higher percentage of older and retired people than the national average, but we expect this to reduce due to the new housing developments.

Congleton is served by a theatre with productions by local adult and youth amateur dramatics and dance shows and monthly film evenings. Musical organisations are a feature of the town including a Youth Orchestra and Choral Society, and there is a large and thriving University of the Third Age (U3A). We have a beautiful park with the river Dane running through it. Congleton is well known for its attractive floral roundabouts and has been a frequent regional winner and received national recognition in Britain in Bloom competitions.



Congleton Park

There is a strong civic life based from our historic town hall building, and an active history society link with the museum. The town is well served with youth organisations which include the Scout Association, Girl Guiding, Army Cadets, Air Training Corp and secular and church-based youth groups.

The Congleton Partnership¹ is a community based, volunteer organisation, which draws on and utilises the skills and expertise of local residents and organisations in Congleton to work on the following themes.

- **Sustainability** Creating a sustainable future for Congleton.
- **Congleton Creative** Representing Arts and Culture in Congleton

¹ <http://www.congletonpartnership.co.uk/>

- **Dementia Friends** Working towards a Dementia Friendly town
- **Youth Forum** Working together for the benefit of young people in Congleton
- **Projects & Finance** To support and ensure the delivery of projects
- **Senior Forum** Improving Congleton for the needs of our older residents

The town centre has gradually been changing from an area for essential shopping to be more cosmopolitan with increased provision of restaurants, themed bars, cafes and delicatessens reflecting perhaps the needs of new citizens in the town. There is a market twice a week as well as a monthly artisan market. There are various events organised throughout the year such as a food and drink festival, a jazz festival and a biennial carnival. In terms of essential provisions, Congleton is well served by four supermarkets and a few general discount stores. There are 3 major GP practices, a minor injuries hospital and several dental practices. There are also several residential care homes in the town.



Congleton town centre

The housing stock is mostly owner occupied but with significant areas of local authority and privately rented housing as described in the parish fact sheet. The population is mostly of white Caucasian background with mixed professional, executive and manual occupations. The unemployment rate is 1.3% against a national average of 5.1%².

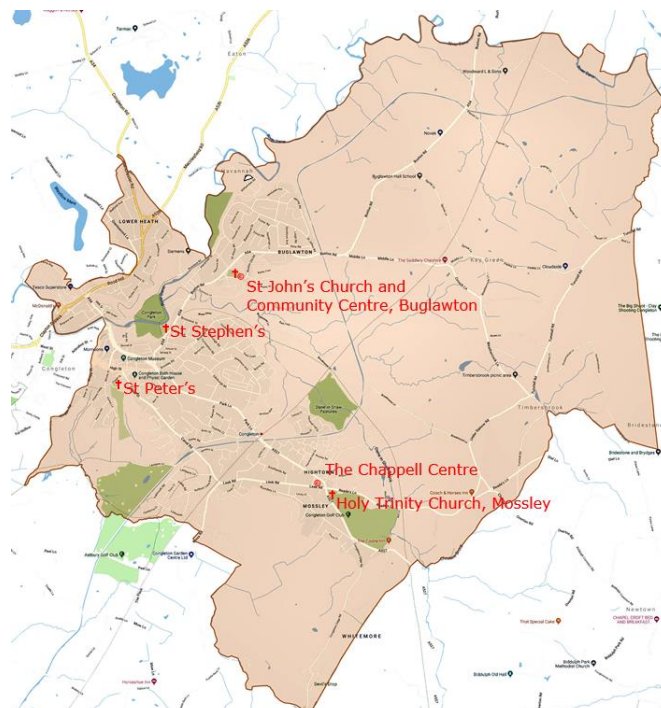
In addition to Congleton Parish there is another Church of England parish in the west of the town, St. James', which maintains a distinctive Anglo-Catholic churchmanship. There are several other churches including New Life church (independent, evangelical), the United Reformed church, St. Mary's Catholic church, Cross Street Pentecostal church and three Methodist churches. The wide availability of spiritual and pastoral

support from the Christian churches is to be celebrated and indeed there is a degree of mutual support and shared activities brought about through Churches Together in Congleton (CTC). The number of churches in Congleton is, though, a significant factor in determining the size of individual congregations.

² Measured as recipients of Jobseekers allowance or not in work and claiming UC, House of Commons Library Briefing Paper Number 7534, 16th March 2016, data by constituency. (Congleton)

3 The Parish Context

Our Parish serves an expanding population of 17,000 of the 26,000 inhabitants of Congleton. The electoral roll stands at 194 with an average Sunday services attendance across the four churches of 140. A network of home and fellowship groups supports our learning and growth and we have an established youth and children's ministry. Our Parish churches are St. Peter's and St. Stephen's in and near the town centre respectively. Our chapels of ease are St. John's in Buglawton in the north west of the Parish and Holy Trinity in Mossley to the south of the Parish. We have thriving community centres in Buglawton (St. John's Community Centre) and in Mossley (The Village Hall and The Chappell Centre). St. Peter's site also includes the Parish Rooms where the Parish administrative office is located and a usable outdoor space. The Parish is also blessed with a very active team of Readers and lay leaders, supported by the parish administrator, churchwardens, a Parish Evangelist, study groups and children and youth leaders.



Congleton Parish

Our last Parish profile in 2004 described our team ministry as “Four Churches, One Mission”, we are now moving to “One Church Family, One Mission” and with this in mind the PCC submitted a Pastoral Scheme to the Diocese to change our pastoral arrangements. The Church Commissioners and Bishop of Chester approved the new Pastoral Scheme which was brought into law on the 1st August 2019. As a result of this, the four different church congregations are coming together for worship at St. Peter's and St. Stephen's churches. The other two churches, designated as Chapels of Ease, are available for Pastoral Offices, at major festivals and for midweek acts of worship, particularly for those who have difficulty travelling.

The rationale for introducing the scheme is to help us achieve the aims of the Parish

2020 Vision in the face of diminishing financial resources and an aging congregation. Fundamentally the 2020 Vision is based on the growth of the church, discipleship and pastoral support and requires a change in staffing to focus on pastoral support and growing a younger church for the 2020s and beyond.

As two churches have changed to Chapels of Ease there are sensitivities which we recognise and need to address. However, we see significant advantages in pooling our resources to focus on providing services in two churches on Sundays rather than three or four. Some people have allegiances to buildings with which they have had a lifelong relationship, but our priority is to gather together for worship in larger numbers and in fewer locations in order to be most effective in our discipleship and outreach.

Our future mission is to reach out with the love of Christ to those that are not yet part of our church community; engaging with them wherever they are and our community buildings are proving to be useful in this respect. They provide opportunities for us to meet and build relationships with

families, vulnerable people and groups. These contacts provide openings for us to show both our faith in action and, where appropriate, to witness to the belief that inspires us. In this way we hope to bring others into a relationship with God that will enrich their lives and help build God's Kingdom in our town.

4 The Rector we need

The Parish welcomes the ministry of men and women and we are comfortable operating under the oversight of women bishops. Above all we need a person who is passionate about Jesus; a person of action who will guide us and strengthen us as we work to bring the good news of the gospel to the people of Congleton. We are looking for a strong leader able to inspire and guide the members of our congregation to implement our 2020 Vision. We see this as an opportunity for our new Rector to help us refine and implement our strategy and to attract new residents in the area who are looking for a church family and who have no prior allegiance to one of our existing four churches.

As an open Evangelical Church community based in a town with an expanding population, we are seeking a Rector who can lead us spiritually and practically, to develop further and realise our mission of outreach and grow a younger church. After much prayerful consideration we believe that the Parish seeks in its new Rector that he/she has:

- A clear Bible based ministry that is guided by the Holy Spirit
- An ability to develop new and traditional worship styles to enable spiritual development for Christians of all ages and backgrounds
- A commitment to develop further ministry to young persons and families
- A passion to engage with those who do not come to church with a focus on families, the vulnerable and the poor
- A display of strong pastoral skills and empathetic approach

We believe that the skills and qualities that will be needed in the Rector are: -

- Personal demonstration of faith, through witness and testimony, that is inspirational to others to deepen and apply their faith
- Encouragement of discipleship and spiritual growth through small groups
- Leadership through prayer and action to motivate, delegate to and empower others to achieve the key principles set out in the summary section (see page 2).
- Competent, motivated and dynamic leadership
- Gifted communication skills with the experience of managing change sensitively with tact, diplomacy and determination
- Non-judgmental with a genuine Christian love for others

5 Our People

In addition to the Rector we have two paid posts for a Parish Administrator and a Children and Families Missioner. Under the new Pastoral Scheme, clergy will comprise the Parish Rector and potentially a “house for duty” minister supported by our lay staff and leaders. We have tasked several working groups with developing new arrangements for worship, pastoral support, community development and utilisation of church and Parish buildings. Cross parish representation was actively encouraged for each of these groups which met over a period of several months. Each group came up with recommendations and the detailed implementation of these needs to be agreed and actioned.

It is envisaged that any house for duty minister will have a particular role in providing pastoral care for our existing church members, supported by a licensed pastoral worker who commenced training in September.

There are four active Readers and two further Readers Emeriti and a Parish Evangelist. Currently, we have four churchwardens and a PCC treasurer. We are evolving to a new PCC structure as part of the implementation of the new pastoral scheme.

There are also individuals taking a leadership role in services and bible study and groups actively involved in pastoral care, baptism visiting, fund raising, church music and children’s and youth work. Details of many of these activities can be found in section 6.



Our Readers planning the next services over a coffee



Parish Evangelist, Joan Proctor

6 Parish Life

The Parish covers a large area of Congleton, including the town centre. Our four churches currently serve a population of 17,000 and the town is expanding quickly as a result of the occupation of new housing estates.

The Parish contains four primary schools one of which is Church of England controlled (Mossley) and with which we have strong links through our four Foundation Governors, leadership of weekly assemblies and termly visits by pupils to the church. We have active relationships with three other primary schools; Marfields – which is just outside the parish, Havannah and Buglawton. There are two nurseries which also have active links with our churches. There are two large secondary academy schools on the outskirts of the Parish. As part of the Children and Families Missioner's work we hope to deepen relationships with pupils, teachers and parents at these schools and extend them to Daven primary school.

We have links to many other organisations including

- Congleton Town Council
- Congleton Street Pastors
- Churches Together in Congleton including Congleton Bible Week
- Cheshire East Council – Connected Communities, Healthbox and Homeless Officer
- Plus Dane Housing Association for support with bus costs and residential issues
- Police PCSO surgeries
- Buglawton Community Group - In-Bloom and local residential issues
- Primary Schools for breakfast drop-in, litter picking, Victorian days
- Church House Pub – community carols
- Adullam Homes – occasional referral of people to our facilities
- CHOC (Congleton and Holmes Chapel)– health initiatives with 3rd sector...social prescribing plus
- United Reformed Church – partnership with Dance to Health programme and Big Heart Luncheon Club and some membership of Team Song
- New Life Church for the Community Bus
- David Lewis Centre – hosting student involvement with luncheon club

An important part of our fellowship is to support our congregations in their pastoral needs. Our future mission will also extend to those that are not yet part of our church community and our community buildings are proving to be places that offer immediate links to those who are outside our current church family. Opportunities such as these are significant in attracting and engaging with families, vulnerable people and communities.

We have a social media presence on Facebook, Instagram and Google. We also have two websites; one for the Parish³ and one for St. Peter's dedicated to heritage activities.

6.1 Services

During the vacancy we initially used a pattern of services alternating between two pairs of churches on a Sunday plus a mid-week Holy Communion. From 2020 Sunday services will routinely be held only in our two parish churches, St. Peter's and St. Stephen's, with a mid-week daytime Holy Communion at Holy Trinity, monthly Tea Church at St. John's and additional services in churches on, for example,

³ <http://www.congletonteamparish.co.uk/Indexfr.htm> and <http://www.stpeterscongleton.co.uk/>

major and Patronal Festivals. On the first Sunday of the month we have a single celebration service for the whole parish in one of the parish churches. Further recommendations have been developed by the worship group which are under consideration. Weekly provision for children during our Sunday services is through our “Kids Together” and “Kids for Christ” clubs which meet the needs of up to 10 children. Our lay leaders take an active role in leading all types of our services. At least one service each month is signed for the deaf.

For those unable to attend church services, home communion visits are made to approximately 10 people by our pastoral support team on a monthly basis.

For several years, the Parish has held a Christmas Eve communion in St. Stephen’s at 9 pm and at Holy Trinity and St. Peter’s at 11:30 pm. In addition, at Christmas the Parish holds a “Christmas Without a Loved One” service to support the recently bereaved.

6.2 Pastoral Activities



Rev. Lynne Cullens of St. Andrew and John the Baptist, Crewe giving a talk at the Parish Breakfast



Street Pastors in Congleton town centre

We have a number of groups and activities which support the pastoral needs of our church members as documented in the Parish Fact Sheet. These include Mossley Mothers Union and Parish Ladies Fellowship, each with 22 members and meeting monthly, plus the monthly Parish Breakfast held between September and May which regularly attracts around 35 people. Each church congregation has its own arrangements for pastoral care of its congregation. A Pastoral group has met to discuss recommendations for the future.

Since 2011 a very popular event has been our annual parish holiday to various seaside resorts, attracting 40-50 people who enjoy socialising together and feel sufficiently supported to be able to take a break in a “safe” environment. Our approximately 10 youth members meet once per month socially and once per month for youth focused teaching on a Sunday morning.

Congleton Street Pastors is an ecumenical group of which several of our members are Prayer or Street Pastors. Street Pastors are

active in the town centre on Friday or Saturday evenings providing support for those out and about.

6.3 Outreach

6.3.1 Children & Young Families

We provide a school run drop-in café at St. John's Community Centre serving hot drink and toast free of charge. Two "Open the Book" teams lead weekly and / or monthly assemblies in three primary schools where Bible stories are read and acted out with simple props to help put the Bible messages across. Our activities with local schools have included Experience Easter and Experience Christmas with schools visiting a church to experience a number of Stations where the story is told from the point of view of those who were part of it. For families we currently offer a messy style Good Friday, Harvest and Christingle/Advent activity and service. At Christmas the Parish provides a variety of Nativity/Crib services in several of the churches which are very well attended. The



Experience Christmas

Parish has a good relationship with Kids Planet Day Nursery over the road from St. Peter's Church and provides short services at Easter, Harvest and Christingle for the children and staff and offers the church for the nursery Christmas service attended by parents. Old Hall Children's Nursery have held their annual nativity services in St Stephen's for the last twelve years and the money they collect from their programmes is kindly donated to the Church. Mossley Mothers Union actively supports a "virtual baby" project during the Autumn and Spring Terms at Congleton High school to increase awareness of the responsibilities of parenthood.



Christmas Lights switch-on, 2018

We have a stall at the annual town event switching on the Congleton Christmas Lights which has included various activities; handing out free popcorn, providing opportunities for children to dress-up in nativity clothing and writing prayer cards for loved ones, all of which enable us to reach out, demonstrate and share our faith in the community.

A weekly "See and Know" Baby and Toddler group meets in St. Peter's Parish Rooms and from this has evolved the fortnightly "Create and Grow" group where young Mums are meeting to explore and express their faith in artistic ways.



See and Know toddler group

6.3.2 The older generation

The Big Heart Luncheon Club attracting around 40 people provides a hot meal at St. John's Community Centre on most Fridays from 12:00-1:30pm. The Congleton Partnership 17-seater community bus is hired to provide free transport for some of those attending, few of whom are regular church goers. We served over 1500 meals in 2018 and this forms a successful bridge to the Tea-Church.



Tea Church February 2019

Tea Church is a monthly informal service held in the St. John's Community Centre featuring a light afternoon tea with free transport to and from the event attracting around 45 people of mixed and no churchmanship. Last year nearly 400 people came to the Tea Church of which roughly 80 people were, as far as we know, non-church goers, so this was a breakthrough.

We hold services each month in two care homes both for church members who are now resident in care homes as well as for anyone else resident there.

CAMEO (Come and Meet Each Other) takes place on the fourth Wednesday of the month in St. Stephen's Pillar Room, where older people can come and enjoy a couple of hours of lively chat, debate and fun. Mossley Fellowship, a gathering of mature members of the parish, meet monthly in the village hall.

The church fellowship based in St Stephen's have a tradition of sending birthday cards from the Church Family when someone reaches 70 and thereafter. These are sent to regular members of the congregation and those who cannot attend due to age or ill health.

6.3.3 All Ages

In 2013 we held our parish Harvest Service in the Tesco car park as part of our efforts to go out and meet people where they are, rather than always expect them to come to us. This was a successful event and repeated in 2016.



Harvest festival on Tesco's car park

St. Peter's is open on Tuesdays from April to July with a series of free spiritual, cultural and creative events in the form of short services, talks, concerts and exhibitions. This enables us to meet people who otherwise would not come into the church. The church is also open to visitors on Saturdays from March to October. These opportunities attract some 700+ visitors; local, national and international.

In 2018 St Peter's hosted a major flower festival for Congleton's Britain in Bloom bid involving eleven churches and attracting 308 visitors.

6.4 Heritage & Events

As a grade 1 listed building St Peter's has much to offer church tourism visitors and we have worked with Heritage Lottery Fund support to provide attractive and informative pop-up banners and a



A silhouette in St. Peter's Church

website to share the heritage (details at foot of page 9). St. Peter's also participates in the national Heritage Open Days.

As the town's Civic Church, St. Peter's usually host the town Carol Service with the local Silver Band, attended by Civic dignitaries, the MP and representatives of various organisations.

St. Peter's is also the venue for the Remembrance Day Service following a short Act of Remembrance at the town War Memorial. In 2018 St. Peter's in co-operation with the Armed Service Covenant enabled several silhouettes to be present representing soldiers from the town who had died in World War 1. The mayor's inaugural service is often held at St Peter's.



Royal Netherlands Army and other Uniformed services at the Remembrance service in 2018

Over the years several concerts have been held in the churches with an annual choir concert at Holy Trinity Mossley and several concerts, organ and piano recitals at St. Peter's. A recent concert featured pupils from Chethams school of music and students from Manchester University.



Music students take a bow.



Mile of Pennies



Rode Hall Silver Band at St. Stephen's Christmas Fair

The Parish holds a Table-top sale each Spring and a Christmas themed event in late November, using facilities at Mossley Village Hall. Popular monthly coffee mornings are held on the first Saturday of the month from March to December in St. Stephen's Church plus annual events such as a Christmas Fair, Summer Fair, and Cheese & Wine Evening. Rode Hall Silver Band provide music at the Christmas Fair and have performed many of their own concerts in the church. These events are attended by church and non-church members of the community and the money raised goes to local, national and international charities. The coffee mornings have raised over £25,000 and have provided a warm and friendly welcome to all visitors from the community over the last 15 years.

The March coffee morning features a dazzling display of coins called 'the Mile of Pennies'. Everyone who comes to the event is invited to help lay interesting patterns of coins along the aisles.

6.5 House Groups

There are seven different lay led groups that meet throughout the parish with differing tempos and depths of study / pastoral care suitable for a wide variety of people. These are gatherings of three to fourteen people.

- Weekly on a Tuesday evening in a member's home - Bible reading and study group for the retired
- Weekly on a Wednesday morning in the Chappell Centre following Holy Communion – a social / pastoral gathering of around a dozen people
- Weekly on a Wednesday evening - IDEAs home group (Improving, Demonstrating, Enjoying and Applying our faith).
- Weekly on Wednesday evening - meeting with four young mums at one of their houses where they share fellowship and then study a bible passage through which they grow in love, and understanding of God, Jesus and the Holy Spirit, helping their faith to grow.

- Weekly on a Thursday morning in the Chappell Centre - meeting of approximately 14 older members from across the parish. After a time of fellowship, they study a bible passage as the above group.
- Weekly on a Thursday evening in a member's home - bible study following various different resources.
- Monthly on Monday in a member's home - ecumenical prayer group to pray for the work of Open Doors.

6.6 Music



Part of the music group

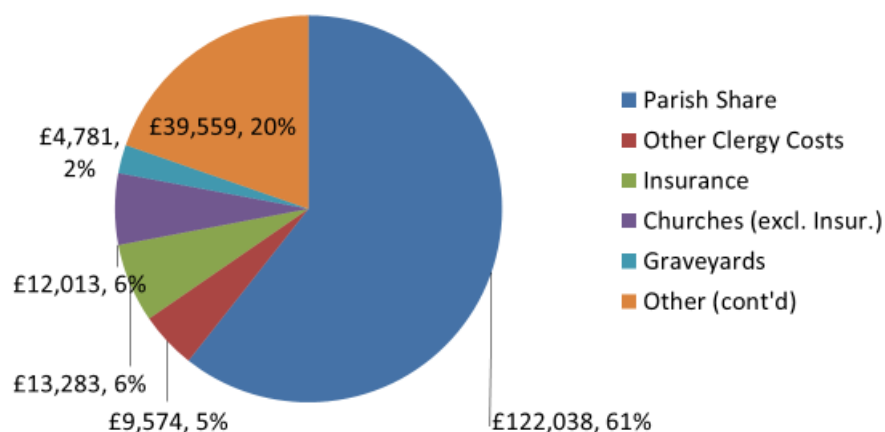
We use a wide range of music from Complete Anglican Hymns and Mission Praise and from contemporary sources such as Stuart Townend, New Scottish, Resound, and the like. The music used is reflected in the singing groups we have with small occasional individual church choirs and Team Song, which comprises a fellowship group from the parish (plus a couple of others from the URC) who enjoy singing in worship and learning new songs for congregational singing; indeed the congregations are usually enthusiastic singers in the main. Similarly, we have a range of musicians, some of whom prefer playing along traditional lines and others who will happily play a fuller repertoire according to the worship/service requirements. Each of the churches have a piano and an organ and we have two musicians who play guitar and violin. We have also had Taizé services and have used a 'singing service' based on the life of Jesus.

6.7 Financial Summary

On 1st January 2018 the Team moved to a Common Purse for the PCC and the 4 churches. Earlier, in 2017, due to falling income and the inability to reduce staffing costs in the short-term, the Diocese agreed to a deferment of part of the monthly Parish Share. This arrangement ended late 2018, and at the end of the year the outstanding debt was £23K. This is now being repaid over 5 years. General (i.e. Unrestricted) income for 2018 was £190K and expenditure was £201K. After adjustments the final accounts for 2018 show a deficit of £17K for General Funds, the balance of which was £42K at the end of 2018. The Parish also has 10 Restricted Funds totalling £245K, of which the 3 main ones are for the restoration and reordering of a Grade 1 Listed church (St Peter's) and for the work of a Children and Families' Missioner. The 2018 accounts have been finalised and examined and are available on request.

General Expenditure 2018

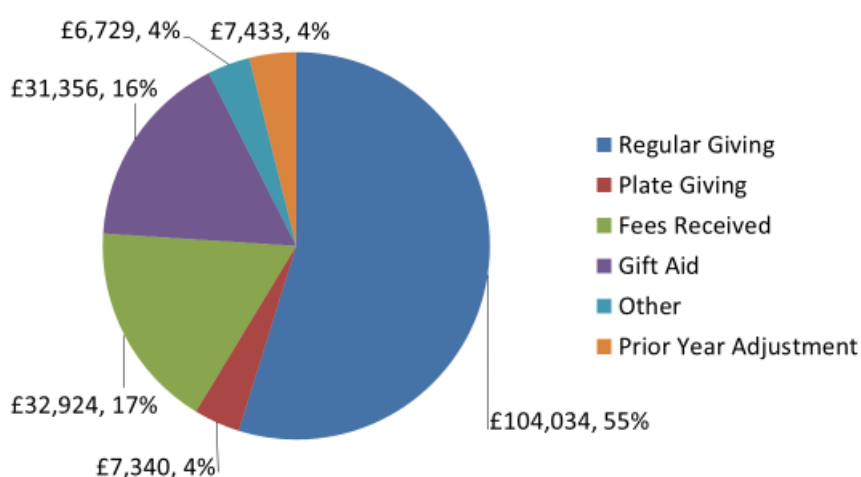
£201,248



For 2019 the Parish Share rate is 1.275, as the Pastoral Scheme includes provision for a House for Duty Priest; this recruitment is currently “on hold” and pending the arrival of the new incumbent. The budget also includes £10K for remedial work from recent Quinquennials (see Fact Sheet). The result is a projected deficit of £12K by the end of the year. The principal income (Giving by the congregations) has been affected by uncertainty over the Pastoral Scheme but should be clearer later in the year when the budget for 2020 will be considered.

General Income 2018

£189,817



The incumbent and wardens of St Peter's Church are trustees of the St Peter's School building which is currently leased to Kids Planet Day Nursery who run a pre-school in the premises. The money generated is used to maintain the building and to support work with children within the Churches.

7 Facilities and Buildings

The Parish has a Rectory and contains four churches, St. Peter's, St. Stephen's, St. John's and Holy Trinity. Adjacent to St. John's is the St. John's Community Centre and close by Holy Trinity are the Mossley Village Hall, Chappell Centre and the Rectory. In the grounds of St. Peter's are the Parish Rooms which currently contain the Parish Office.

7.1 The Rectory

The current Rectory is a 4-bedroomed property at 2 Hartley Gardens, Mossley. This is an ideal modern family home with good sized, easily maintained gardens located very close to both Holy Trinity church and The Chappell Centre and within walking distance of Mossley C of E Controlled primary school.



Mossley Rectory Front Aspect



Mossley Rectory - Rear Garden

7.2 St. Peter's Church

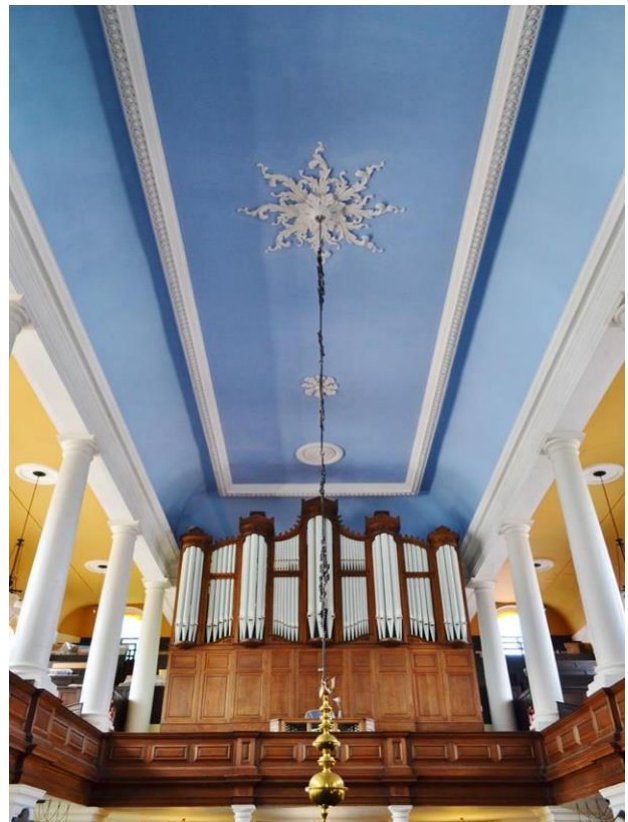


St. Peter's Church exterior

St. Peter's is a grade 1 listed Georgian church. In order to create a building suitable for worship and community use in the 21st century an extensive programme of renovation and development is underway. A significant legacy will help us realise the vision.

Building on that extensive programme of renovation (see Appendix "Key to the Future") the St Peter's project has so far involved the replacement of the whole roof, repairs to the tower, replacement of the nave ceiling and the creation of a small kitchen and toilet inside the church. We are now actively working on plans to develop St. Peter's church further. Options being investigated with architects include:

- Creating a narthex from the rear west wall to the front edge of the west gallery, with removal of doors into the west porch.
- Converting the current vestry and removing parts of two pews to make a small children's teaching room. Changing the side chapel into another room that could be used as a quiet or prayer room during the week.
- Adapting the east end of the nave to create a large platform for worship leaders, musicians and drama purposes.
- Creating an extension along the south side of the church to house toilets, meeting rooms and a kitchen.

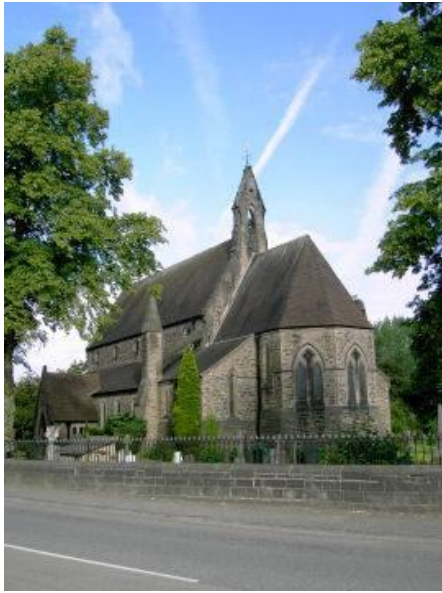


The newly renovated and repainted ceiling

7.3 St. Stephen's Church

The building was completed in 1860 and has a picturesque interior with main nave and side aisles. The building of the Pillar Room in 2004 provided the church with a flexible community space including a comfortable meeting room, toilet facilities, vestry and kitchen. It was constructed such that an upper floor could be added to and accessed via stairs and a lift. The Pillar Room is used for refreshments after services and as a regular meeting room. In winter it has been used as a warm and comfortable

space for services with fewer attendees. The facilities have been a good venue for evenings of lively debate led by guest speakers who have come to share a hot meal with us.



St. Stephen's Church Exterior



A CAMEO Easter Bonnet event



St. Stephen's Interior

7.4 Holy Trinity Church (Chapel of Ease)

Holy Trinity Church is situated at the traffic lights in Mossley. The building dates from 1846, and encompasses a narrow nave without pillars, plus a balcony. In 2011 the rear of the church was converted to provide a separate West Room meeting space with facilities to make hot drinks plus a toilet and baby changing area.

*Holy Trinity Church exterior**Holy Trinity Interior*

7.5 St. John the Evangelist Church (Chapel of Ease)

*St. John's Church Exterior*

St. John's church is situated off the Buxton Old Road in Buglawton. The building dates from 1840, and encompasses a single main room without pillars, and a screened off narthex under the organ loft.

Architects' plans have been drawn up and quotes received to remove the pews and level the floor to create a multi-purpose building for everyday use by both community and church. St John's Community Centre is reaching its capacity and an investment in making the church multi-functional will enhance our standing in the wider community arena.



St. John's interior

7.6 St. John's Community Centre

St, John's Community Centre is next to the Church and contains a large hall, with mezzanine, catering kitchen, toilets and shower and 2 smaller rooms upstairs in the old school master's house which is connected to the main building via a glazed hall area.



St. John's Community Centre Exterior

St John's Community Centre had a footfall in the second year of over 15,000 of which about a third was led by or directly linked to church initiatives. We monitor the centre hours by a crude classification of activities...physical, social, mental, emotional and spiritual...the spiritual number of hours was 100 in a total of 1500 hours last year but is growing! Non-spiritual activities included such as the WI, a Judo school and a board game club.



The "Mug and Game" board gaming club in action in St. John's Community Centre

7.7 Mossley Village Hall



Mossley Village hall and the Chappell Centre

The Hall is currently managed by a Village Hall Committee which is responsible to the PCC. For more than fifty years it has provided a venue for clubs, societies, public meetings and private parties and particularly for church fundraising and church social events. In recent years several improvements have been made to the Hall including a completely re-fitted kitchen to meet

current hygiene and safety legislation. The Hall has also undergone further improvements - the walls have been re-plastered, new wall lights fitted, it has been redecorated and new windows fitted.

7.8 The Chappell Centre

In 2008 Miss Elaine Chappell left a substantial legacy to the Parish of Congleton for the sole use of the Village Hall site. After consultation, a two-storey building known as The Chappell Centre was built alongside the Village Hall, providing a Community Lounge and an Upper Room equipped with audio visual and internet facilities.



Chappell Centre Upper Room first floor meeting room

The Chappell Centre is leased from the parish by a limited company, CTP Networking, which runs the Centre on its behalf. The current 3 Directors of CTP Networking are members of the parish congregation.

The Chappell Centre facilities complement those of the current Village Hall and nearby Old School Community Centre by providing a more modern and well-equipped social amenity for the residents of Mossley and beyond. The Community Lounge is open Tuesdays to Fridays from 9.00-14.00 where the home-made cakes and light lunches are very popular. A warm and friendly welcome is always readily provided by our two part-time Centre Managers and many volunteers and the local PCSO holds a regular Police Surgery in the Lounge.

The Upper Room hosts weekly bible study, Pilates, yoga, U3A and Silver Active clubs (gently exercise for older adults) and a Parkinson's Drop-in Café on the 4th Friday of the month. The Upper Room is also used by various commercial organisations for off-site meetings and training events.

7.9 St. Peter's Parish Rooms



St. Peter's Parish Rooms

St. Peter's Parish rooms are sited within the grounds of St. Peter's Church and are our administrative centre. As well as the parish office there are toilet and kitchen facilities and a large meeting space used for several of our children's and families outreach activities as well as private hire.

There is a large grassed space which is regularly used by both the See and Know Carers and Toddlers group and the adjacent nursery, together with occasional use one-off community events such as the Queen's Jubilee Party.



St Peter's Parish Rooms interior



Parish Office Overview



Our Parish Administrator, David Aston, at work

8 Appendix: Key to the Future

See <https://1drv.ms/b/s!AE4lQlZL1KMOgu89>